

CERTIFICATE OF LOCATION OF GOVERNMENT CORNER

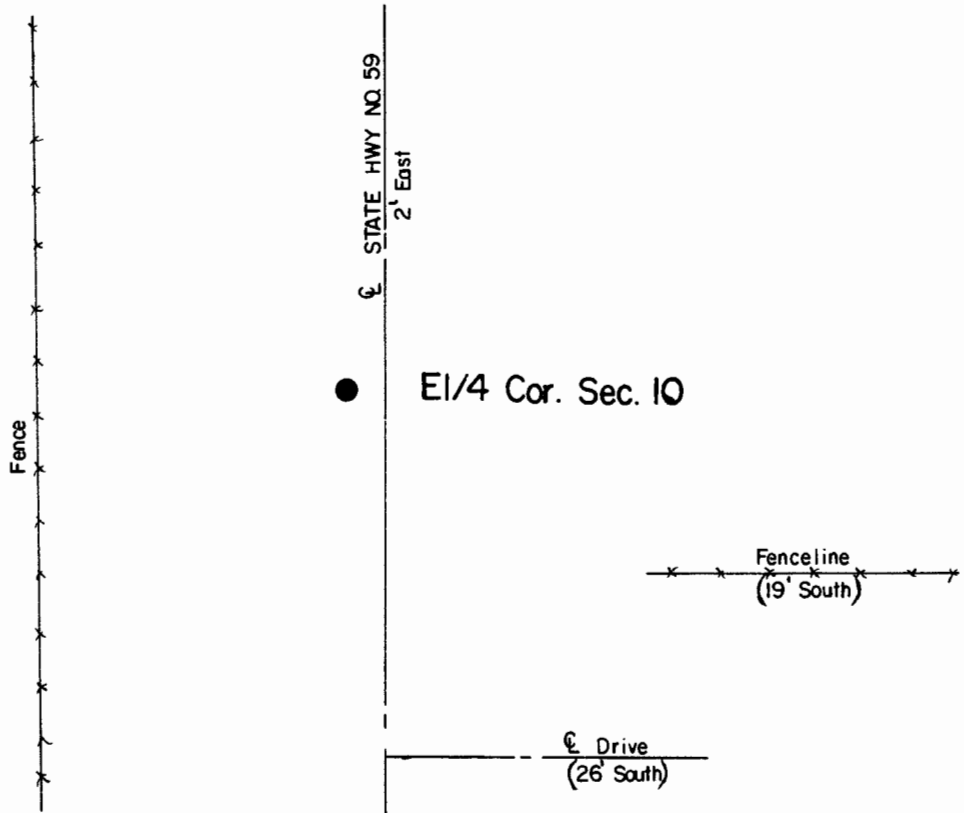
East Quarter Corner of Section **10** , Township **108** , Range **41** 5th P.M.

STATE OF MINNESOTA, County of Murray.

Statement: Oct. 27, 1989 - Found the brass plug placed in 1932 by the Minnesota Department of Highways. Removed the monument and placed a capped (LS 14895) 3/4 inch iron pipe in the pavement surface.



SKETCH OF REFERENCE TIES



Statement of evidence relative to this corner location is on the back of page.

I hereby certify that this document and the data contained herein was prepared by me or under my direct supervision and that I am a duly Registered Land Surveyor under the laws of the State of Minnesota.


Duane A. Bonnema Nov 6, 1989
Date

Minnesota Registration No. 14895

OFFICE OF THE COUNTY RECORDER
COUNTY OF MURRAY **NOV 15 1989**

I hereby certify that this document was filed in the County Recorder's office at ____ M. on the ____ day of _____ A.D., 19 ____

County Recorder James V. Johnson

By _____, Deputy

DOCUMENT NO. _____

East Quarter Cor. Sec. 10 T108N-R41W

Statement:

- September 1861 *Original Government Land Office Surveyor L. G. M. Fletcher records in his field notes, "Set post in mound with trench pits and a charred stake."*
- 1932 *The Minnesota Highway Department records in their field notes during construction of Highway 59, "Sta 696+58.7 , 1/4 Corner , Brass Plug In place." The notes show a symbol which indicates that they found a stone two feet West of the Highway centerline.*
- Oct. 27, 1989 *Duane A. Bonnema, LS Reg. No. 14895, removed 3 inches of asphalt pavement and found the Brass plug placed by the Minnesota Department of Highways in 1932. The brass plug was removed and a hole drilled through the pavement. A probe was pushed through the pavement surface and it hit a stone 3 feet below the surface. The size of the stone is unknown, because it wasn't dug up due to the difficulty of digging through the concrete road surface. Placed a capped 3/4 iron pipe in the pavement surface.*